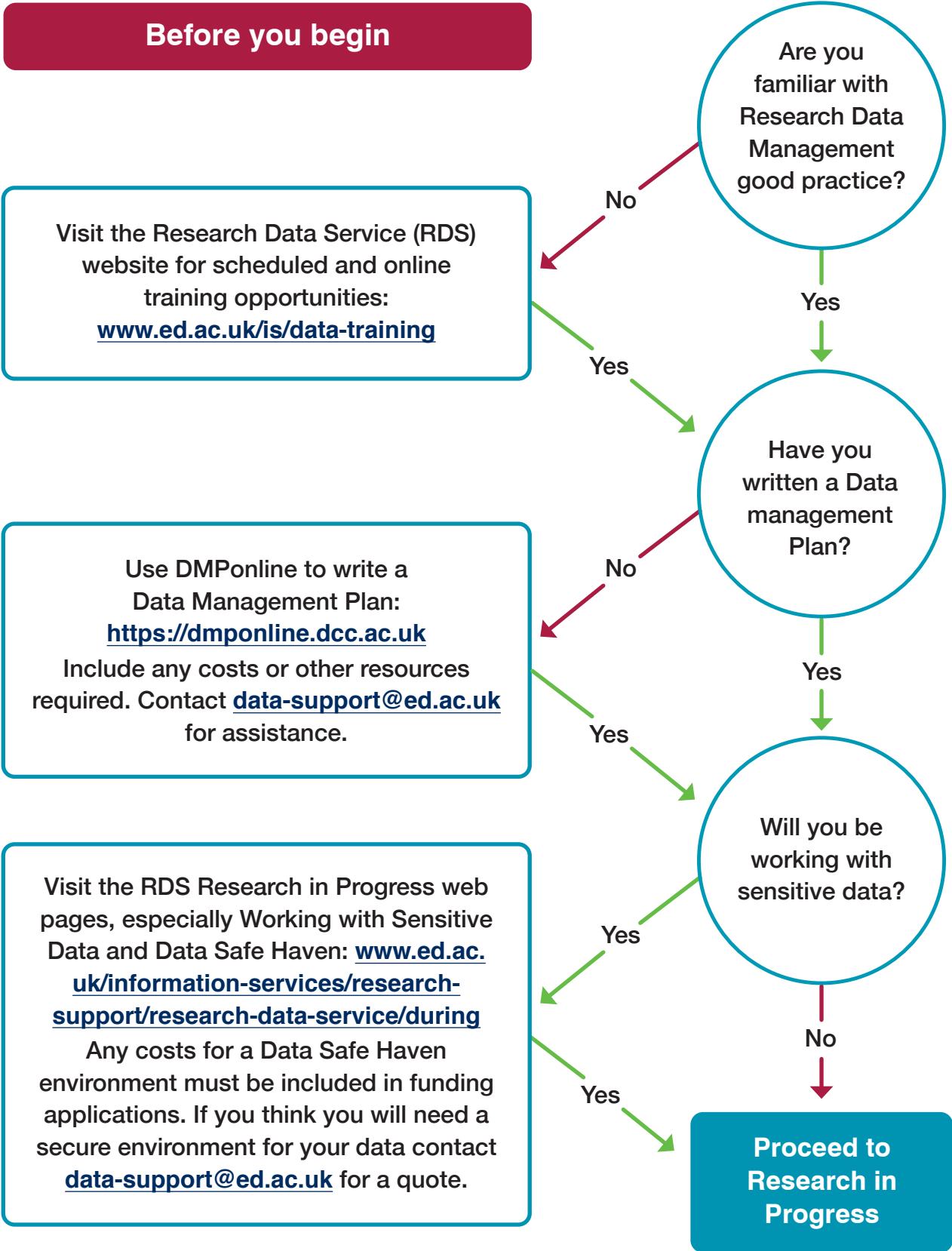
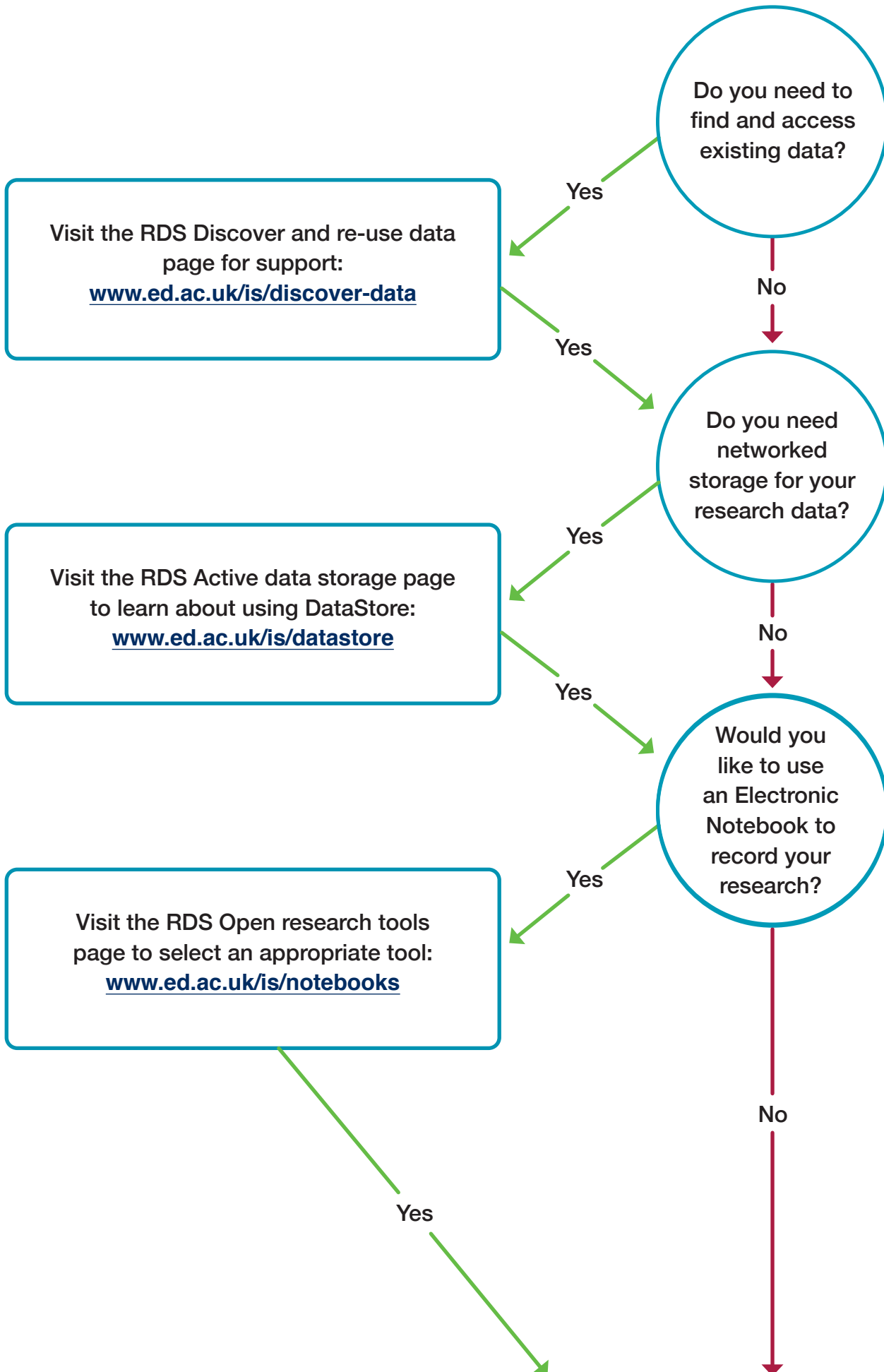
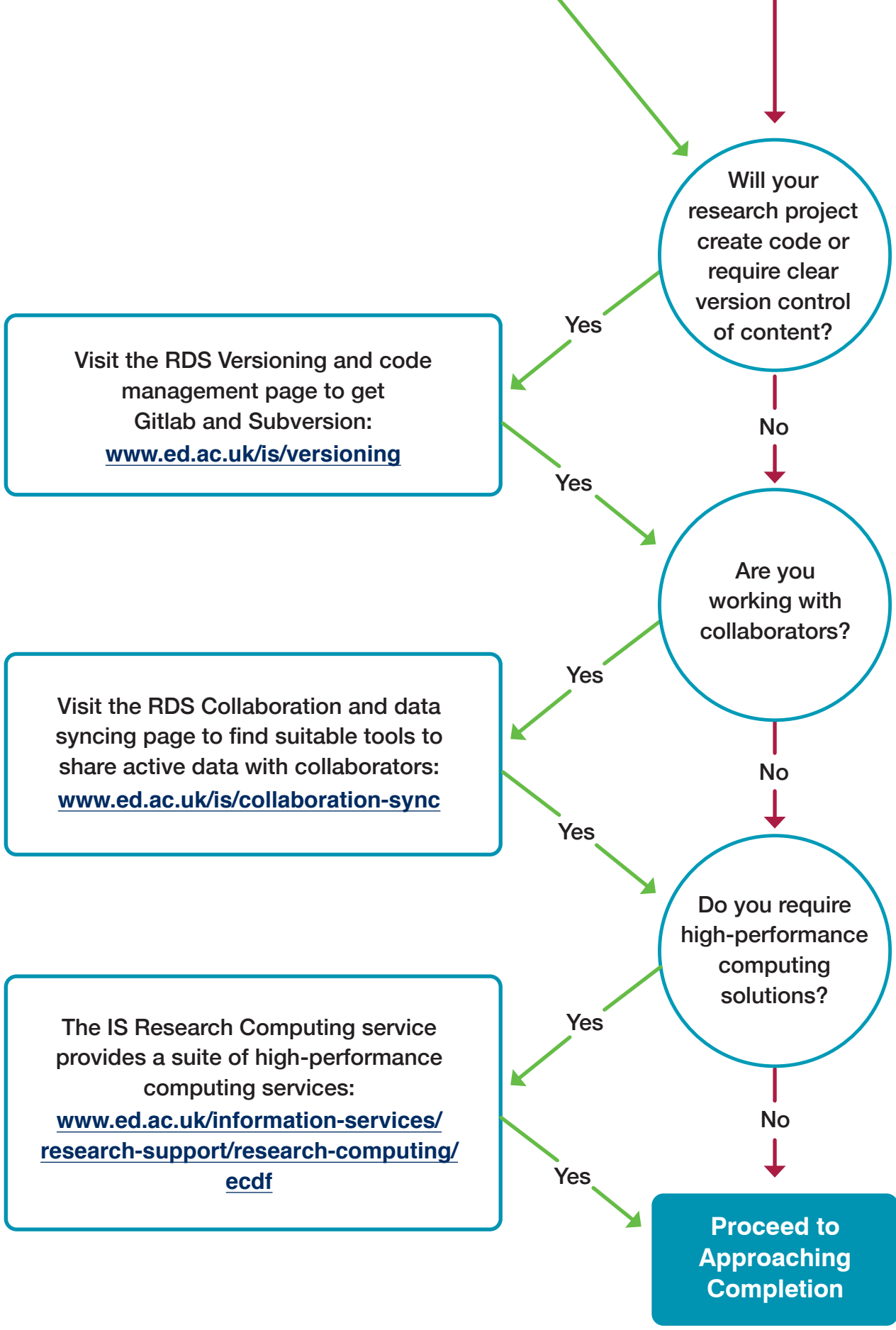


Research Data Management Flowchart



Research in Progress





Visit the RDS Versioning and code management page to get Gitlab and Subversion: www.ed.ac.uk/is/versioning

Visit the RDS Collaboration and data syncing page to find suitable tools to share active data with collaborators: www.ed.ac.uk/is/collaboration-sync

The IS Research Computing service provides a suite of high-performance computing services: www.ed.ac.uk/information-services/research-support/research-computing/ecdf

Will your research project create code or require clear version control of content?

Are you working with collaborators?

Do you require high-performance computing solutions?

Proceed to Approaching Completion

Approaching Completion

Visit the RDS Approaching completion page for guidance on a suitable data repository:
www.ed.ac.uk/information-services/research-support/research-data-service/after

Deposit your data in that repository and create a dataset record in Pure:
www.ed.ac.uk/pure

Are you required or do you wish to offer your research data to a disciplinary data repository?

Yes

No

Deposit your data in Edinburgh DataShare. Your data can now be re-used and cited by yourself and others, will be linked in Pure and preserved indefinitely:
<https://datashare.ed.ac.uk>

Yes

Do you have research data that can be shared openly?

No

Deposit your data in Edinburgh DataVault for long-term retention and safekeeping by the University. A Pure record will be created as part of this process.
www.ed.ac.uk/is/datavault

Yes

Do you need to securely retain data that is too large for a repository or that needs to be kept confidential?

No

Consult your data management plan. Securely destroy your data if no archiving options are suitable.

If you require this document in an alternative format, such as large print or a coloured background, please contact [insert: name and contact details]

